

BUILDING C2 - FOUNDATION PLAN
1/16" = 1'-0"

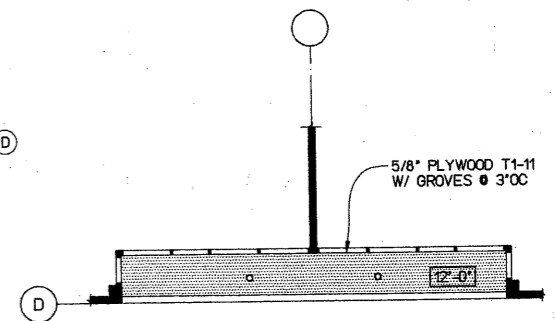
FOOTING SCHEDULE

MARK	SIZE		REINFORCING BARS			REMARKS
	"W"X"L"	"T"	"A"	"B"	"C"	
F-1	3'-0" SQ.	12"	4 #4	4 #4	—	
F-2	5'-6" SQ.	12"	6 #5	6 #5	8 #4	9/A-15
F-3	3'-6" X 8'-0"	12"	10 #4	5 #4	8 #4	8/A-15
F-4	2'-6" CONT.	12"	#4@18	3 #4	8 #4	0 JT.

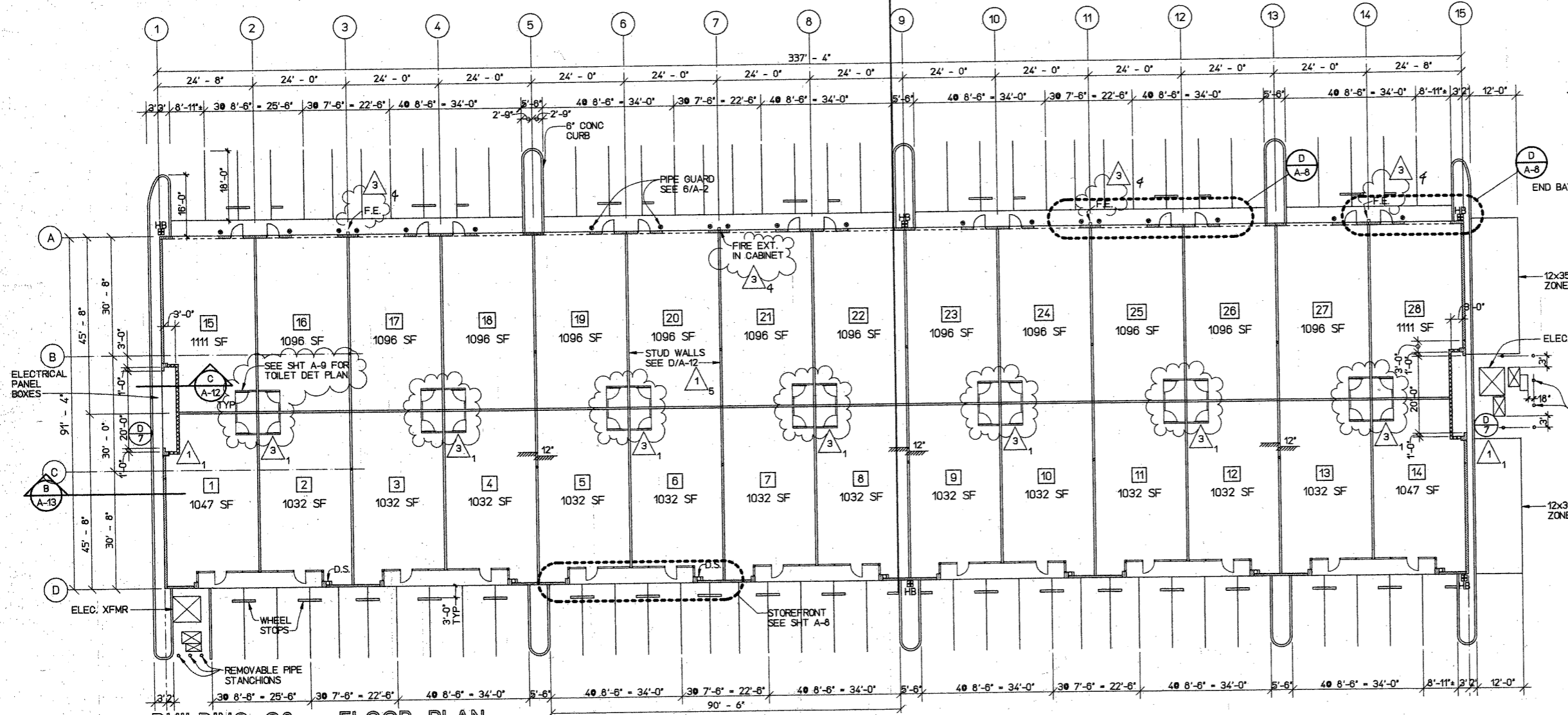
SEE SHEET A-15 FOR DETAILS

PIPE COLUMN SCHEDULE

MARK	SIZE	REMARKS
C-1	5" Ø PIPE COLUMN	
C-2	6" Ø PIPE COLUMN	
C-3	3-1/2" Ø PIPE COLUMN	
C-4	W6X25 COL.	SEE 8/A-16

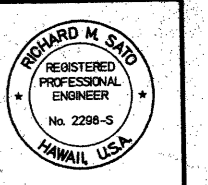


TYPICAL REFLECTED CEILING PLAN AT STOREFRONTS
SCALE: 1/8" = 1'-0"



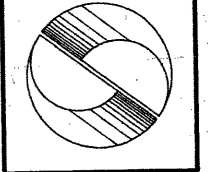
BUILDING C2 - FLOOR PLAN
1/16" = 1'-0"

LEGEND:
 FF=98.0 INDICATES FINISH FLOOR ELEVATION.
 16 INDICATES PRECAST PANEL NUMBER SEE SHT. A-21 TO A-27 FOR ELEVATION & DETAILS.
 C.J.1 INDICATES CONTROL JOINT TYPE SEE SHT. A-2.
 F.E. INDICATES FIRE EXTINGUISHER 10# DRY CHEMICAL TYPE 4A:80B:C IN WALL MOUNTED CABINET.
 [TOF 96.5] INDICATES TOP OF FOOTING ELEV.



THIS WORK WAS PREPARED BY ME OR UNDER MY SUPERVISION AND CONSTRUCTION OF THIS PROJECT WILL BE UNDER MY SUPERVISION. I SUPERVISE THE CONSTRUCTION AS DEFINED UNDER SECTION 94-2-2 OF CHAPTER 82, RULES OF THE BOARD OF PROFESSIONAL ENGINEERS, ARCHITECTS, AND LAND SURVEYORS, STATE OF HAWAII.

RICHARD M. SATO & ASSOCIATES, INC.
 CONSULTING ENGINEERS, CIVIL & STRUCTURAL
 HONOLULU, OAHU, HAWAII
 WAILUKU, MAUI, HAWAII



Kihei Commercial Center
PHASE 1 C
 Kihali, Maui, Hawaii
 THK: 3-9-01por. of 33

BUILDING C-2 GROUND FLOOR AND FOUNDATION PLAN	
DATE	6-15-99
SYN	ELEC. SERVICE AREA & STUD WALLS
DESCRIPTION	ADDED TOILETS & BUILDING DEPT COMMENTS
10-25-98	
DESIGN BY:	
DRAWN BY:	
CHECKED BY:	July 24, 1999
DATE:	
JOB NO.:	8772
SHEET	A-4
OF 18 SHEETS 64	

Plot on 31-Oct-99 11:30:02